

POWER SPLITTERS/COMBINERS

50 & 75Ω

2 WAY-180° 10 kHz to 2 GHz

SURFACE MOUNT



MODEL NO.	FREQ. RANGE MHz f_L - f_U	ISOLATION dB			INSERTION LOSS, dB Above 3dB			PHASE UNBALANCE Degrees			AMPLITUDE UNBALANCE dB			CASE STYLE Note B	CONNECTOR	PRICE \$ Qty. (1-9)						
		L Typ. Min.	M ^o Typ. Min.	U Typ. Min.	L Typ. Max.	M ^o Typ. Max.	U Typ. Max.	L Max.	M ^o Max.	U Max.	L Max.	M ^o Max.	U Max.									
NEW SCPJ-2-9	200-900		24	17		1.0	1.8		6		0.7		YY161	az	28.95							
NEW SCPJ-2-750	30-750	24	18	21	16	20	16	0.7	1.5	1.5	2.2	1.5	2.2	3	4	6	0.8	0.8	0.8	YY161	az	27.95
■ SCPJ-2-1W-75	10-500	30	25	27	20	22	16	1.0	1.5	1.1	1.6	1.5	2.2	3	4	6	0.3	0.5	0.9	YY161	az	26.95
** SCPJ-2-750-75	30-750	26	20	—	—	26	16	1.0	1.5	—	—	1.5	2.2	3	—	6	0.8	—	0.9	YY161	az	27.95
PSCJ-2-1	1-200	35	30	35	25	30	23	0.75	1	0.5	0.8	0.75	1.2	2	2.5	4	0.3	0.15	0.3	A01	az	25.95
PSCJ-2-1W	100-600			30	20				1.0	1.9					6			0.5		A06	az	28.95
⊕ PSCJ-2-2	0.01-20	35	25	30	25	25	18	0.3	0.8	0.2	0.5	0.3	0.6	1*	2	2.5	0.1	0.1	0.2	A01	az	36.95
■ PSCJ-2-1-75	1-200	35	30	31	25	26	20	0.6	1.2	0.8	1.2	1.2	1.8	2	4	6	0.25	0.2	0.5	A01	az	25.95
ZFSCJ-2-1	1-500	30	20	33	25	30	18	1	1.5	1	1.5	1	1.5	2	4	7	0.5	0.2	0.5	K18	as	59.95
▲⊕ ZFSCJ-2-2	0.01-20	35	25	30	25	25	18	0.3	0.8	0.2	0.5	0.3	0.6	1*	2	2.5	0.1	0.1	0.2	K18	as	57.95
ZFSCJ-2-3	5-300	30	20	33	25	30	18	1	1.5	1	1.5	1	1.5	2	4	6	0.15	0.2	0.5	K18	as	49.95
▲ ZFSCJ-2-4	50-1000	30	20	—	—	25	18	1.2	1.9	—	—	1.6	2.4	6	—	7	0.6	—	0.6	K18	as	69.95
ZMSCJ-2-1	1-200	35	30	35	25	30	23	0.75	1	0.6	0.8	0.75	1.2	2	2.5	4	0.3	0.15	0.3	M21	at	57.95
⊕ ZMSCJ-2-2	0.01-20	35	25	30	25	25	18	0.3	0.8	0.2	0.5	0.3	0.6	1*	2	2.5	0.1	0.1	0.2	M21	at	67.95
ZSCJ-2-1	1-200	35	30	35	25	30	23	0.75	1	0.6	0.8	0.75	1.2	2	2.5	4	0.3	0.15	0.3	M22	at	51.95
⊕ ZSCJ-2-2	0.01-20	35	25	30	25	25	18	0.3	0.8	0.2	0.5	0.3	0.6	1*	2	2.5	0.1	0.1	0.2	M22	at	59.95
ZAPDJ-2	1000-2000	22	18	22	18	22	18	1.3	1.8	1.3	1.8	1.3	1.8	6	6	6	0.8	0.8	0.8	F53	as	71.95

L = low range [f_L to $10 f_L$]

M = mid range [$10 f_L$ to $f_U/2$]

U = upper range [$f_U/2$ to f_U]

NOTES:

- ◆ Aqueous washable
 - Non-hermetic
 - * Phase unbalance is 3 degrees max from f_L to $3 f_L$.
 - ** For SCPJ-2-750-75: L=30-375 MHz, U=375-750 MHz
 - ⊕ When only specification for M range given, specifications applied to entire frequency range.
 - Denotes 75 Ohm model, for coax connector models 75 Ohm BNC connectors are standard.
 - ▲ Available only with SMA connectors.
 - ⊕ At low range frequency band (f_L to $10 f_L$), linearly derate maximum input power by 13 dB.
- A. General Quality Control Procedures, Environmental Specifications, Hi-Rel and MIL description are given in section 0, see "Mini-Circuits Guarantees Quality" article.
- B. Connector types and case mounted options, case finishes are given in section 0, see "Case styles & Outline Drawings".
- C. Prices and specifications subject to change without notice.
1. Absolute maximum power, voltage and current ratings:
- 1a. Matched power rating, 1 Watt, except models PSCJ-2-1W and SCPJ-2-1W-75, SCPJ-2-750, SCPJ-2-750-75, AMT-2 0.5 Watt
 - 1b. Internal load dissipation, 0.125 Watt

Mini-Circuits

INTERNET <http://www.minicircuits.com>

P.O. Box 350166, Brooklyn, New York 11235-0003 (718) 934-4500 Fax (718) 332-4661

Distribution Centers NORTH AMERICA 800-654-7949 • 417 335-5935 • Fax 417-335-5945 • EUROPE 44-1252-832600 • Fax 44-1252-837010

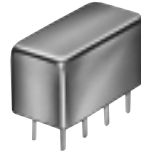
Surface Mount [□], Plug-In & Coaxial

2 Way-0°/180° 5 to 200 MHz

SURFACE MOUNT



AMT



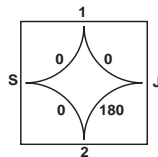
PMT

MODEL NO.	FREQ. RANGE MHz f_L - f_U	ISOLATION dB			INSERTION LOSS, dB Above 3dB			PHASE UNBALANCE Degrees			AMPLITUDE UNBALANCE dB			CASE STYLE Note B	C O N N E C T I O N	PRICE \$ Qty. (10)						
		L Typ. Min.	M ^o Typ. Min.	U Typ. Min.	L Typ. Max.	M ^o Typ. Max.	U Typ. Max.	L Max.	M ^o Max.	U Max.	L Max.	M ^o Max.	U Max.									
♦ AMT-2	50-200		35	20		0.8	1.2		2		0.3		CD636	ls	12.95							
PMT-1	5-200	22	20	24	20	24	18	0.8	1.0	0.9	1.1	1.0	1.5	2	4	8	0.1	0.2	0.5	A04	ba	21.95

L = low range [f_L to $10 f_L$]

M = mid range [$10 f_L$ to $f_U/2$]

U = upper range [$f_U/2$ to f_U]



- S-J ports, isolation 40 dB typical
- Inphase ports, S-1 and S-2, insertion loss 0.2 dB typical
- Amplitude unbalance defined by input S or J ports to output 1 and 2

pin and coaxial connections

see case style outline drawing

PORT	as	at	az	ba	ls
SUM PORT	S	2	1	1	3
PORT 1	1	1	5	2	6
PORT 2	2	3	6	3	4
PORT J	—	—	—	4	1
GND EXT.	—	—	2,3,4,7,8	5,6,7,8	2,5
CASE GND	—	—	2,3,4,7,8	5,6,7,8	—

NSN GUIDE

MCL NO.	NSN
PSCJ-2-1	6625-01-413-2386
PSCJ-2-2	5985-01-332-3084
ZSCJ-2-2	5895-01-340-7761



The Design Engineers Search Engine

Provides Actual Data Instantly
At: <http://www.minicircuits.com>

In Stock... Immediate Delivery

For Custom Versions Of Standard Models
Consult Our Applications Dept.

